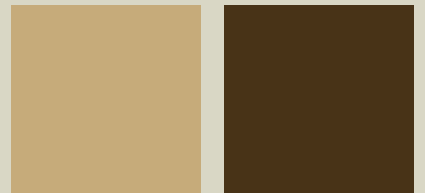




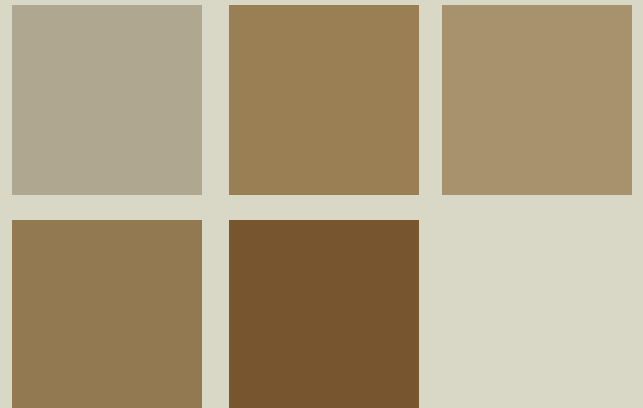
- 2 bedrooms
- 2 bath
- Walk-in pantry
- Vaulted ceilings

*optional basement development*



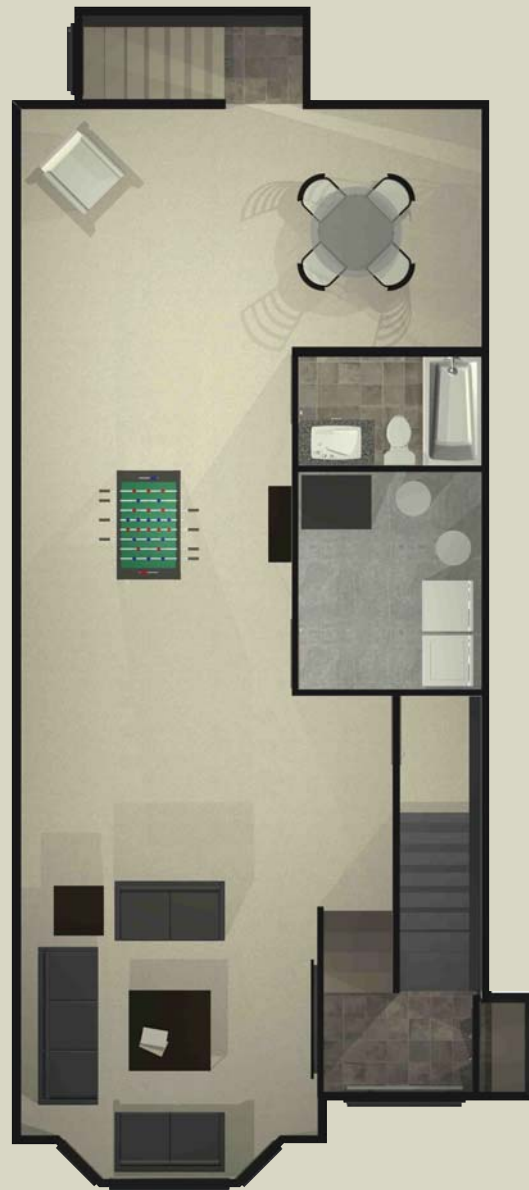
# Sherwood

1078 sq. ft.





Main Floor



Basement

Kitchen	9'11" x 11'1"
Dining Room	12'2" x 9'11"
Living Room	13'7"/15'7" x 13'6"
Master Bedroom	14'9" x 13'2"
Bedroom 2	9'3" x 13'4"

*\*Artist Rendering*



9827 - 97 Avenue  
Grande Prairie, Alberta, T8V 0M9

(t) 780-814-5775 (f) 780-814-5755  
visiongp@telus.net

www.visionhomesgp.com

