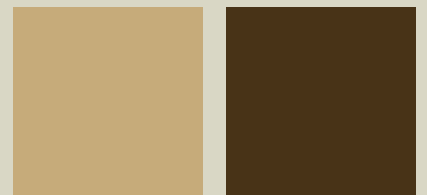


Vision HOMES



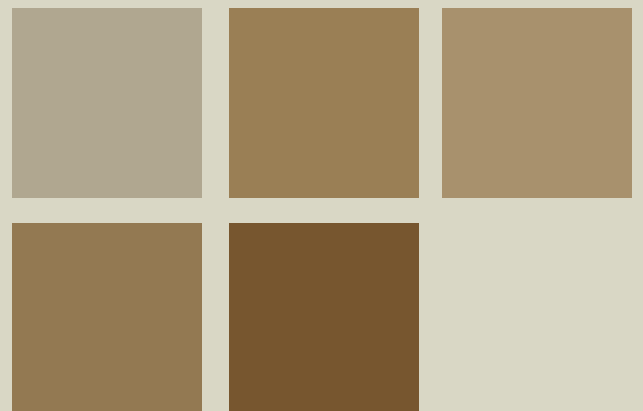
2 bedrooms
1 bath
vaulted ceilings

*optional basement
development*



Wilmore

1184 sq. ft.





Main Floor



Basement

Kitchen	11'6" x 10'0"
Dining Room	11'6" x 9'5"
Living Room	11'6" x 13'0"/15'0"
Master Bedroom	13'11" x 13'3"
Bedroom 2	9'9" x 11'1"
Bedroom 3	11'2" x 8'8"
Garage	22'0" x 24'0"

**Artist Rendering*

Vision
HOMES
 (G.P.) LTD.

9827 - 97 Avenue
 Grande Prairie, Alberta, T8V 0M9
 (t) 780-814-5775 (f) 780-814-5755
 (e) visiongp@telus.net
 www.visionhomesgp.com

