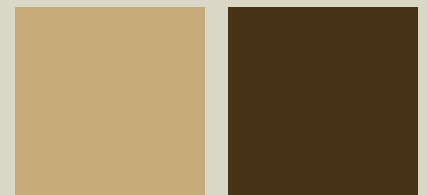


# Vision HOMES



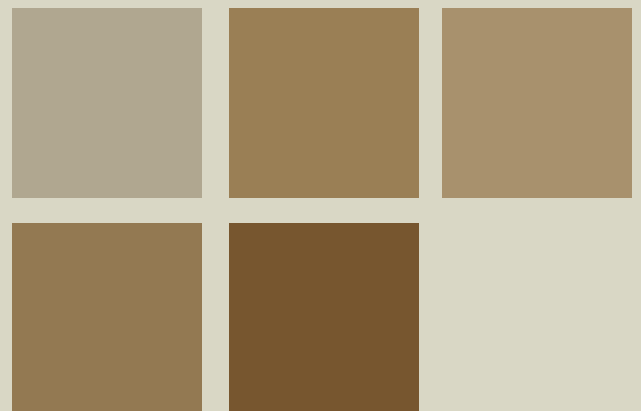
2 bedrooms  
1 bath  
vaulted ceilings

*optional basement  
development*



## Whitney

816 sq. ft.





Main Floor



Basement

- Kitchen 8'0" x 9'6"
- Dining Room 7'7" x 9'0"
- Living Room 11'6" x 14'4"/16'4"
- Master Bedroom 9'10" x 12'2"
- Bedroom 2 8'11" x 10'6"

*\*Artist Rendering*

**Vision**  
**HOMES**  
 (G.P.) LTD.

9827 - 97 Avenue  
 Grande Prairie, Alberta, T8V 0M9  
 (t) 780-814-5775 (f) 780-814-5755  
 (e) visiongp@telus.net  
 www.visionhomesgp.com

