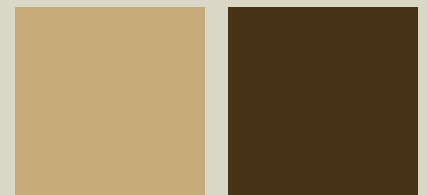


Vision HOMES



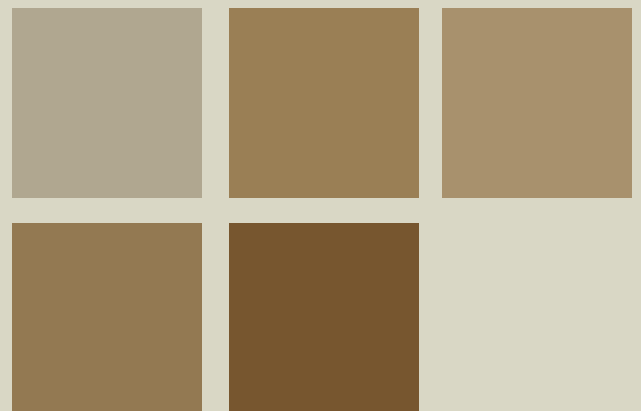
3 bedrooms
1 bath
walk-in pantry
vaulted ceilings

*optional basement
development*



Sulford 3

1034 sq. ft.





Main Floor



Basement

Kitchen	10'2" x 11'10"
Dining Room	9'9" x 9'10"
Living Room	13'1" x 12'9"
Master Bedroom	11'1" x 12'7"
Bedroom 2	9'8" x 9'6"
Bedroom 3	9'3" x 9'2"

**Artist Rendering*

Vision
HOMES
 (G.P.) LTD.

9827 - 97 Avenue
 Grande Prairie, Alberta, T8V 0M9

(t) 780-814-5775 (f) 780-814-5755
 (e) visiongp@telus.net

www.visionhomesgp.com

