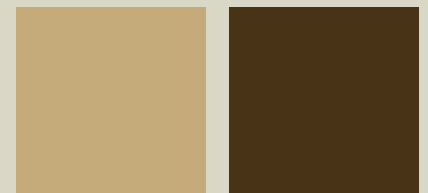


# Vision HOMES



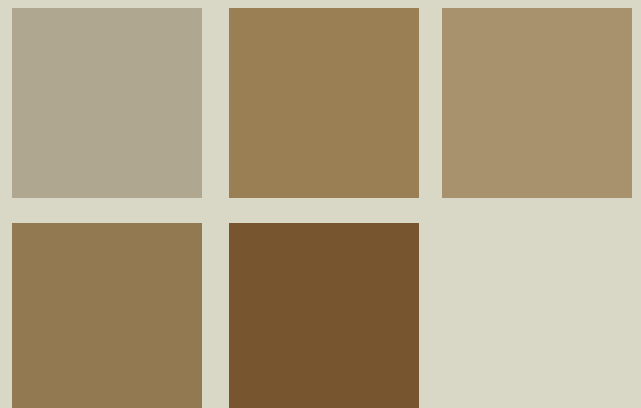
2 bedrooms  
2 bath  
walk-in pantry  
vaulted ceilings

*optional basement  
development*



## Sulford 2

1034 sq. ft.





Main Floor



Basement

<b>Kitchen</b>	10'2" x 11'10"
<b>Dining Room</b>	9'4" x 9'10"
<b>Living Room</b>	13'1" x 12'9"
<b>Master Bedroom</b>	14'2" x 11'8"
<b>Bedroom 2</b>	9'4" x 12'3"

*\*Artist Rendering*

**Vision**  
**HOMES**  
 (G.P.) LTD.

9827 - 97 Avenue  
 Grande Prairie, Alberta, T8V 0M9  
 (t) 780-814-5775 (f) 780-814-5755  
 (e) visiongp@telus.net  
 www.visionhomesgp.com

