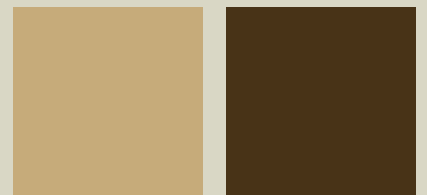


# Vision HOMES



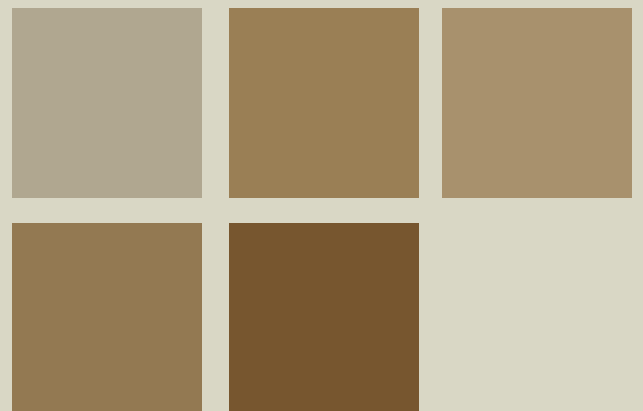
2 bedrooms  
1 bath

*optional basement  
development*



## Clifton

885 sq. ft.





Main Floor



Basement

Kitchen	9'10" x 12'0"
Dinette	10'9" x 9'0"
Living Room	14'0" x 12'2"
Master Bedroom	10'8" x 11'10"
Bedroom 2	10'0" x 9'6"

*\*Artist Rendering*

**Vision**  
**HOMES**  
 (G.P.) LTD.

9827 - 97 Avenue  
 Grande Prairie, Alberta, T8V 0M9  
 (t) 780-814-5775 (f) 780-814-5755  
 (e) visiongp@telus.net  
 www.visionhomesgp.com

