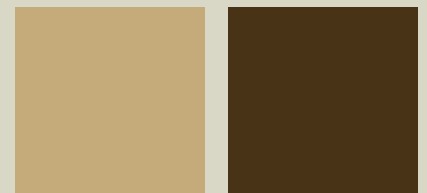


Vision HOMES



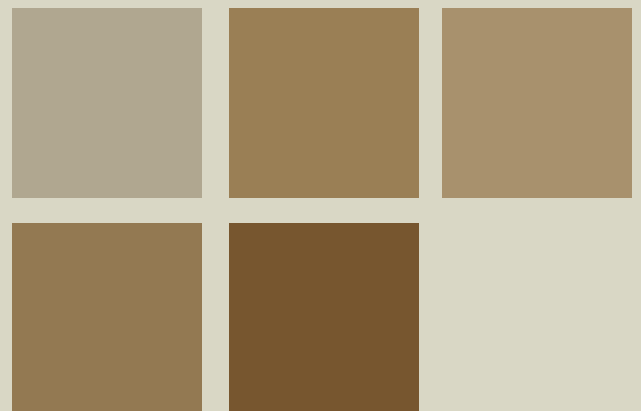
2 bedrooms
1 bath
walk-in pantry
vaulted ceilings

*optional basement
development*



Camden

967 sq. ft.





Main Floor

Kitchen	9'4" x 12'8"
Dining Room	11'1" x 10'4"
Living Room	10'9" x 15'1"
Master Bedroom	10'9" x 14'0"
Bedroom 2	9'0" x 9'10"



Basement

**Artist Rendering*

Vision
HOMES
(G.P.) LTD.

9827 - 97 Avenue
 Grande Prairie, Alberta, T8V 0M9

(t) 780-814-5775 (f) 780-814-5755
 (e) visiongp@telus.net

www.visionhomesgp.com

